

2025 annual report to the Community

# Prospect North Primary School

Prospect North Primary School number: 0570

Partnership: Adelaide - Prospect



School principal:

Russell Barwell

Date of endorsement:

18/02/2026



Government of South Australia  
Department for Education

# Context Statement

Prospect North Primary School caters for students from R-6. At the time of this report, the enrolment in 2025 is 373. Prospect North Primary School is classified as Category 6 on the Department for Education Index of Educational Disadvantage. At the time of this report, the school population includes 4% Aboriginal students, 20% students with disabilities, 34% students with English as an additional language or dialect (EALD) funded background, 1% children/young people in care. Further information about the school is available on the school's website (including its context statement), as well as the My School website.

Data Source: Department for Education data holdings from Mid census captured in AUGUST 2025.

## Governing Council Report

In 2025, Governing Council worked closely with school leadership and staff on school priorities and direction. This is always towards improving the learning experiences and opportunities for our students and also incorporates increasing school-parent-community connectedness. We welcomed new parents onto Governing Council and are really grateful for their time, perspectives and willingness to be involved.

Governing council oversees the OSHC and Vacation Care program with healthy numbers attending and very reasonable fee increases, in line with increases in wages and other costs.

This last year we saw a large number of site development initiatives including a new pathway to the transportable classroom, a new projector in the gym, development of the nurture yard improvements, new drink fountains, and new kids kitchen modules right next to the garden, so that students can learn to cook with the food they have grown.

In terms of Building Community connections, parent volunteers supported the Fathering Project, End of year picnic and Christmas concert. Parents continued class Whatsapp groups and also ran the Mother's Day and Father's Day gift stalls, the secondhand uniform stall and volunteered their time for a number of class excursions.

I'd like to thank the 2025 Governing Council and parent volunteers for their time and energy. I really encourage new families to join us moving forward as I step back from the chair role and we form the new council in 2026. We have excellent down-to-earth approachable leadership at this school and committed parents, who are great to work with.

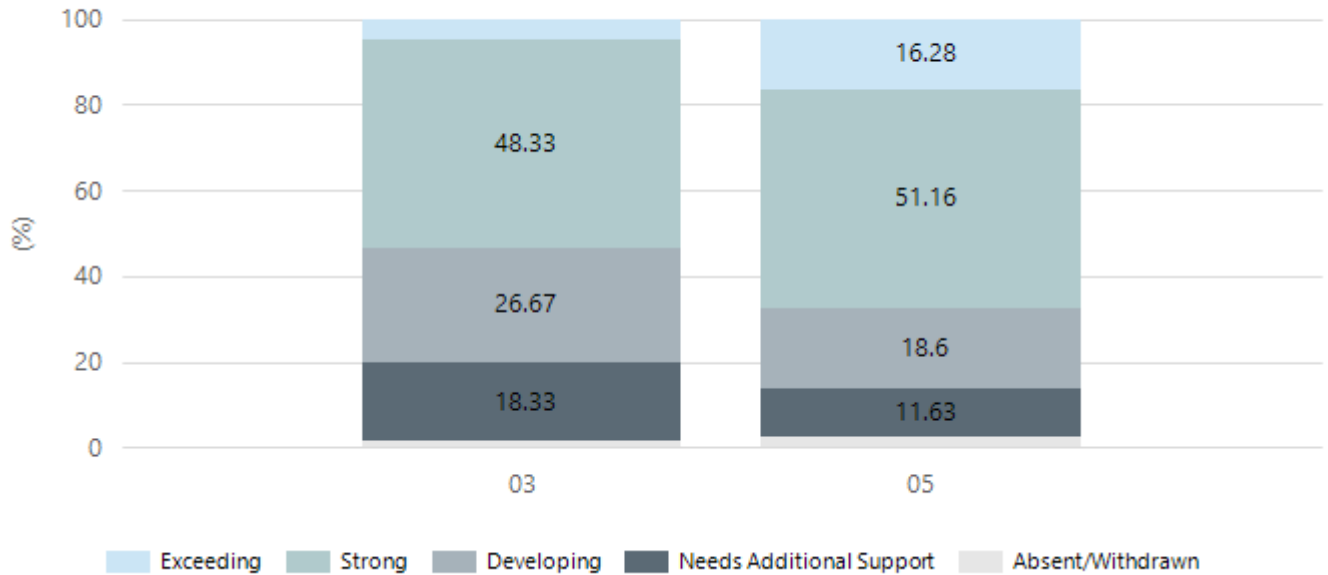
Carly McLaughlin – 2025 Governing Council Chair

# Performance Summary

## NAPLAN Proficiency

In 2023 the Australian Curriculum, Assessment and Reporting Authority (ACARA) - a Commonwealth Independent statutory authority - announced changes to NAPLAN performance reporting. The new approach replaces the previous numerical NAPLAN bands and the national minimum standard.

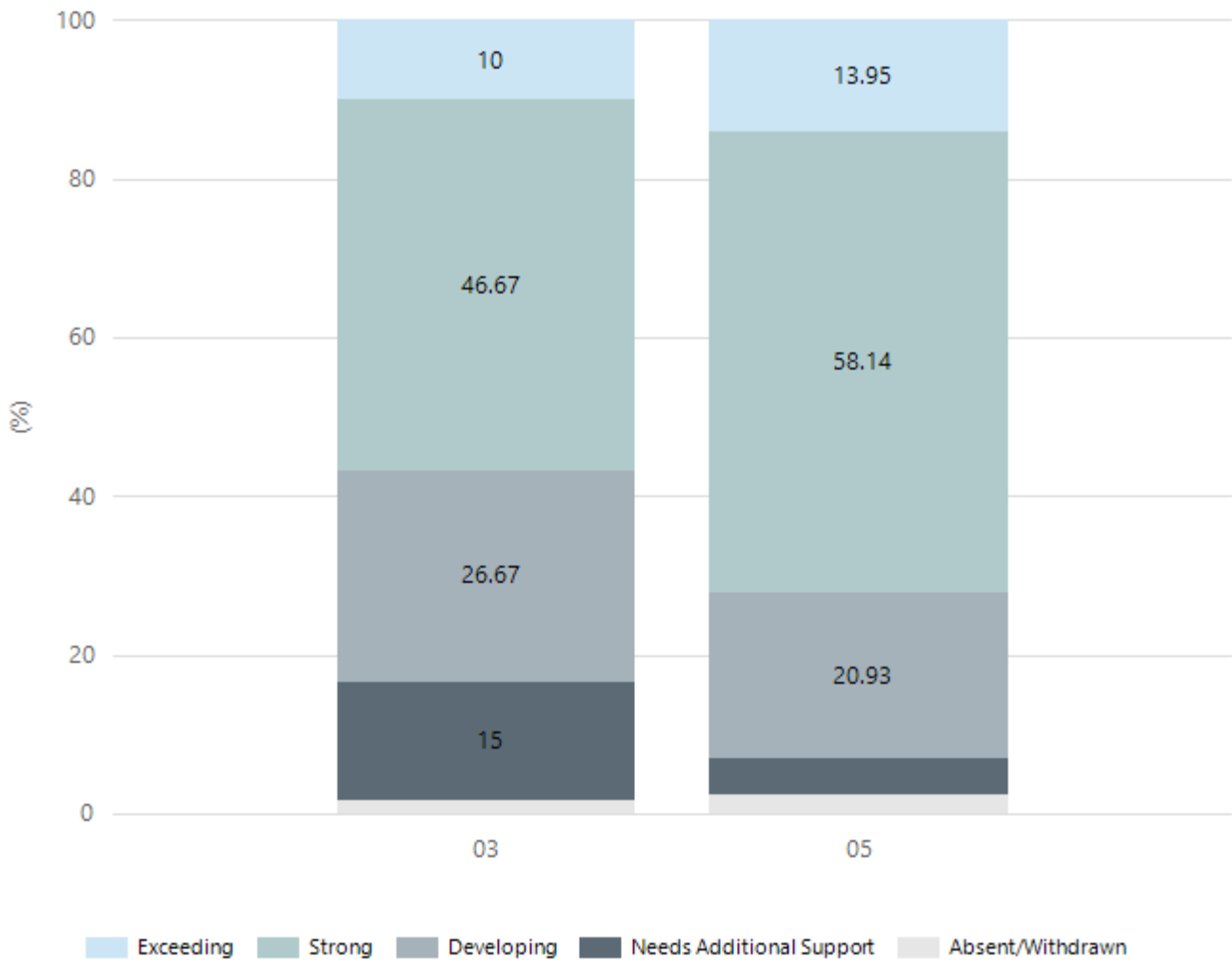
### Numeracy



Year Level	03	05
Exceeding	3	7
Strong	29	22
Developing	16	8
Needs Additional Support	11	5
Absent/Withdrawn	1	1
Total	60	43

Data Source: Department for Education Assessment Data Holdings, 2025. If there are less than 6 students who sat NAPLAN in a school, no information will be shown. If a year level has less than 6 students, that year level will not be shown in NAPLAN results.

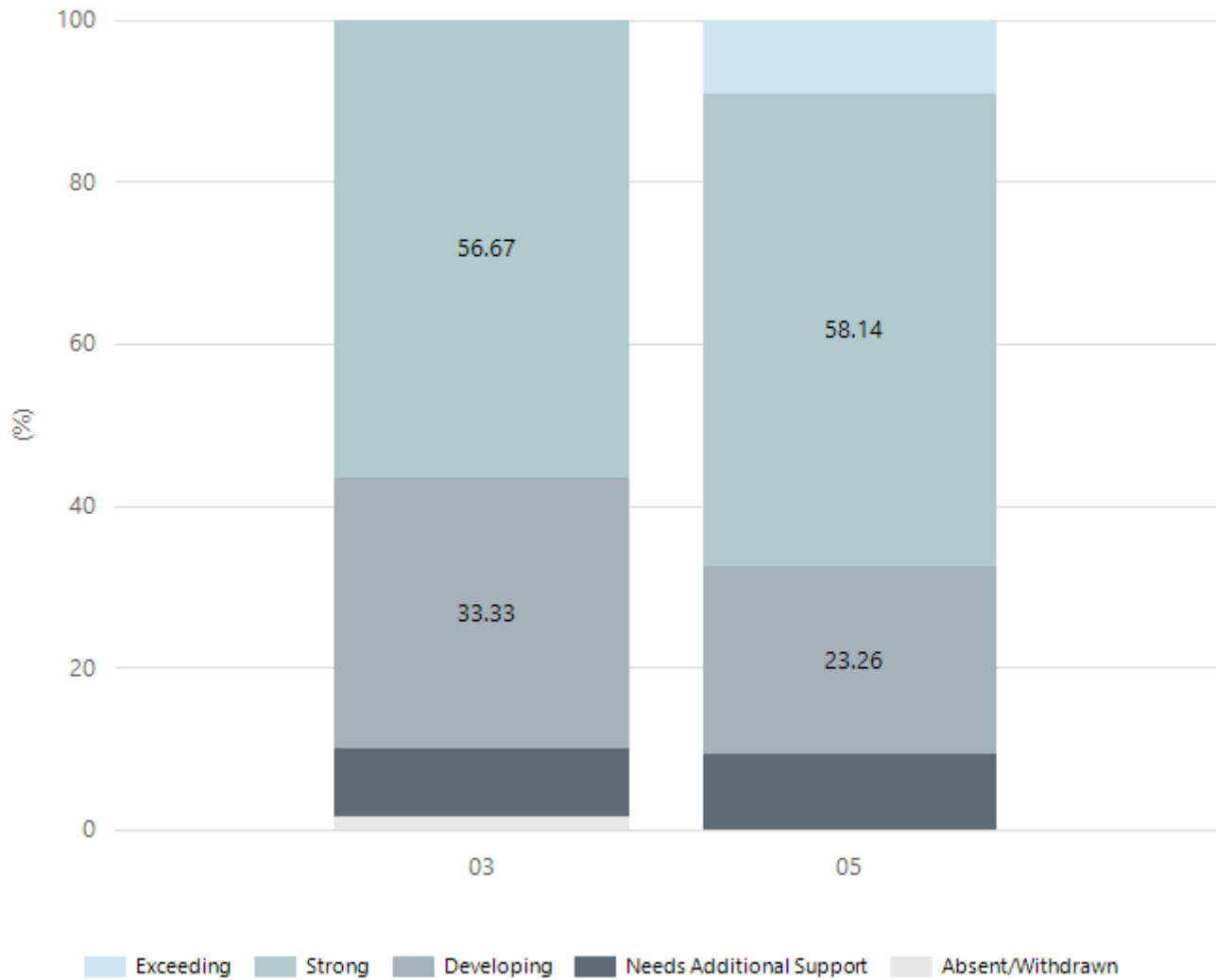
## Reading



Year Level	03	05
Exceeding	6	6
Strong	28	25
Developing	16	9
Needs Additional Support	9	2
Absent/Withdrawn	1	1
Total	60	43

Data Source: Department for Education Assessment Data Holdings, 2025. If there are less than 6 students who sat NAPLAN in a school, no information will be shown. If a year level has less than 6 students, that year level will not be shown in NAPLAN results.

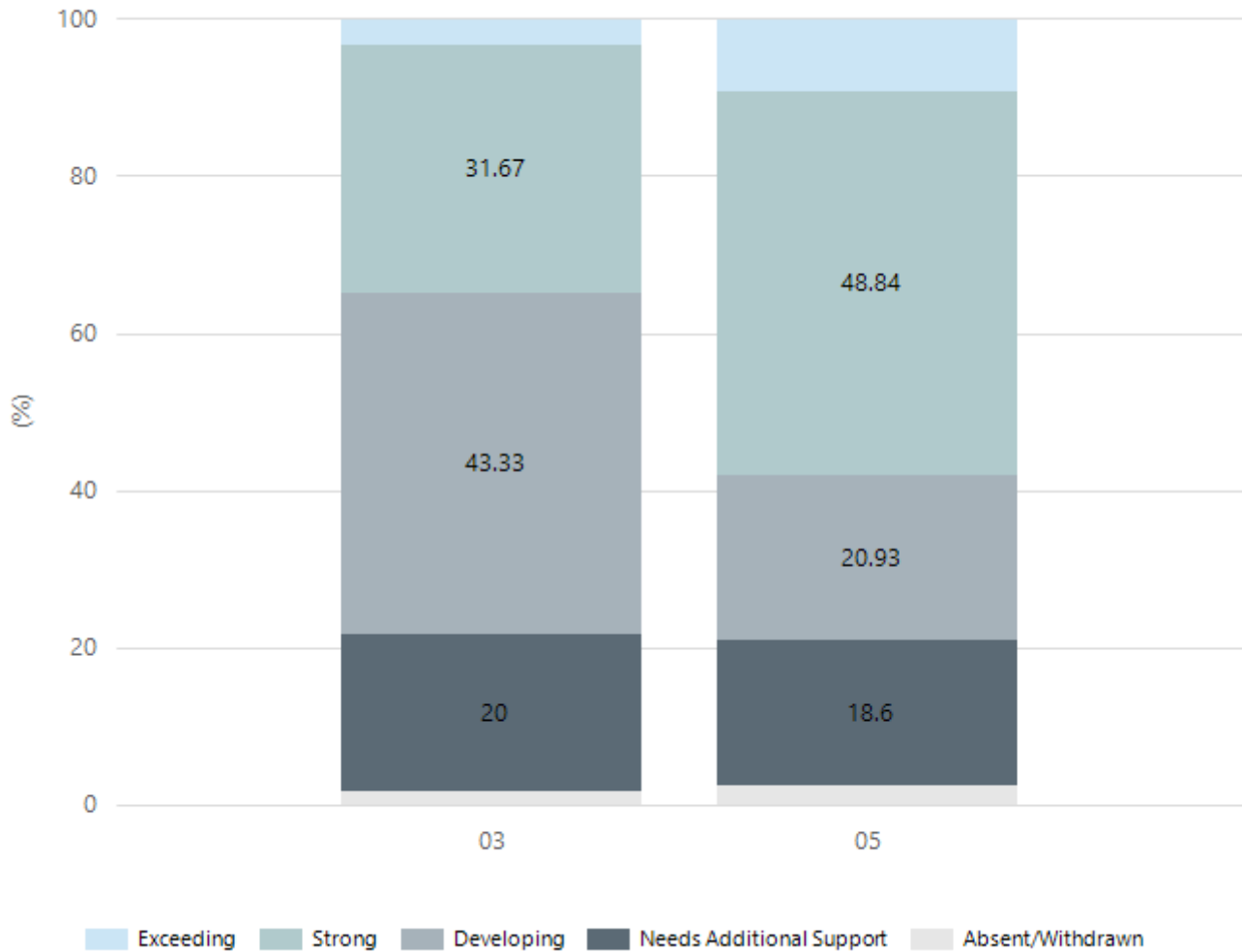
## Writing



Year Level	03	05
Exceeding		4
Strong	34	25
Developing	20	10
Needs Additional Support	5	4
Absent/Withdrawn	1	
Total	60	43

Data Source: Department for Education Assessment Data Holdings, 2025. If there are less than 6 students who sat NAPLAN in a school, no information will be shown. If a year level has less than 6 students, that year level will not be shown in NAPLAN results.

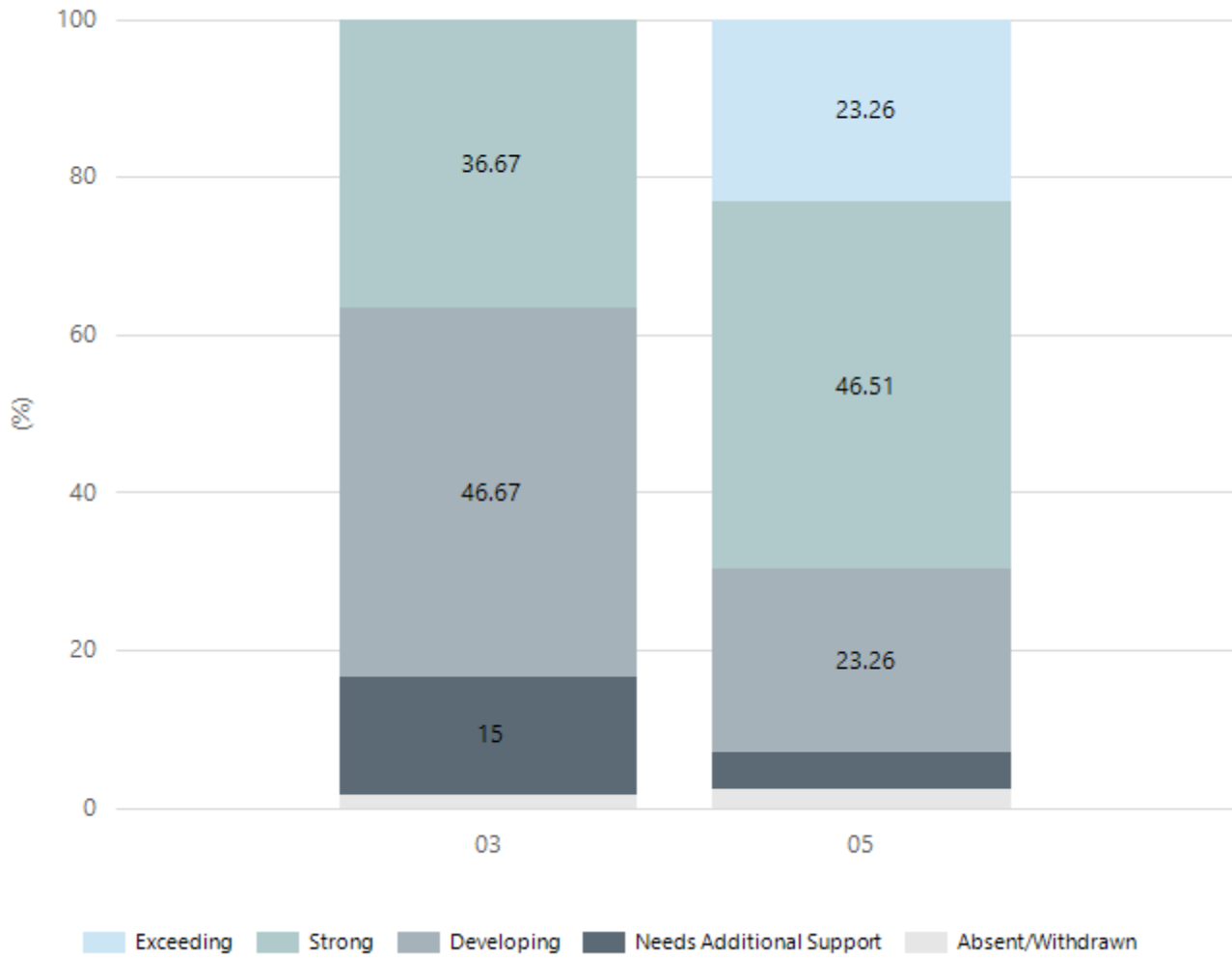
## Grammar



Year Level	03	05
Exceeding	2	4
Strong	19	21
Developing	26	9
Needs Additional Support	12	8
Absent/Withdrawn	1	1
Total	60	43

Data Source: Department for Education Assessment Data Holdings, 2025. If there are less than 6 students who sat NAPLAN in a school, no information will be shown. If a year level has less than 6 students, that year level will not be shown in NAPLAN results.

## Spelling



Year Level	03	05
Exceeding		10
Strong	22	20
Developing	28	10
Needs Additional Support	9	2
Absent/Withdrawn	1	1
Total	60	43

Data Source: Department for Education Assessment Data Holdings, 2025. If there are less than 6 students who sat NAPLAN in a school, no information will be shown. If a year level has less than 6 students, that year level will not be shown in NAPLAN results.

## School Attendance

Year Level	2023	2024	2025
Reception	86.2%	88.6%	92.6%
Year 01	84.5%	87.2%	91.5%
Year 02	88.3%	87.9%	91.4%
Year 03	91.1%	90.9%	93.5%
Year 04	89.3%	91.2%	93.0%
Year 05	89.0%	89.2%	91.9%
Year 06	86.9%	89.0%	92.0%
Primary Other		61.3%	
Total	87.7%	89.0%	92.4%

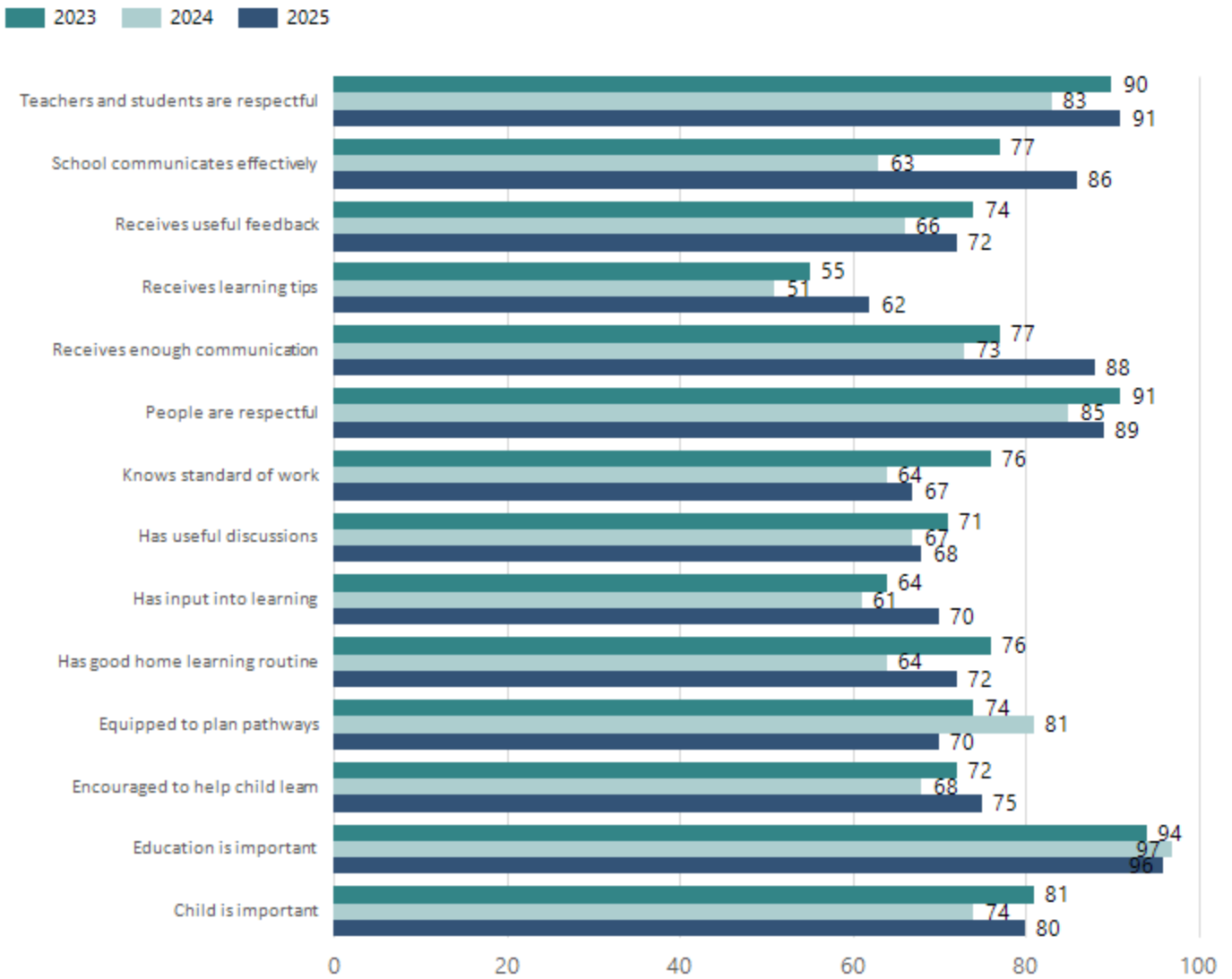
Data Source: Department for Education Attendance Data, Semester 1 Report 2025. A blank cell indicates there we no students enrolled. 'Primary Other' includes students enrolled in specialised education options. 'Secondary Other' includes students who have already spent a year at Year 12 and elected to undertake further study at Year 12.

## Attendance Comment

In South Australia, all children and young people must be in school from 6 years to 16 years old. They must attend a government or non-government school full time. From age 16 to 17 however, young people must attend school or an approved learning program (such as an apprenticeship, traineeship, accredited course or university). Schools and parents must encourage and support students to come to school every day. Parents and caregivers must make sure their child is enrolled in a school, and attends school all day and everyday it is open, unless a child is sick or has an approved exemption. Teachers and leaders actively follow up when a student misses school, including recording all absences and non-attendance. All schools in South Australia have local attendance procedures governed under the Education and Children's Services Regulations 2020.

# School Parent Opinion Survey Results

Proportion of agree/strongly agree response(%)



Data Source: 2025 Department for Education Parent Opinions Survey, Term 3 2025.

# Intended Destination

Leave Reason	Number	%
IS - INTERSTATE	14	52.0%
NG - ATTENDING NON-GOV SCHOOL IN SA	7	26.0%
OV - LEFT SA FOR OVERSEAS	1	4.0%
TG - TRANSFERRED TO SA GOVERNMENT SCHOOL	5	19.0%

Data Source: Department for Education Destination Data Report, 2025. Data extract term 3 2025. Data shows recorded destinations for students that left the school in the previous year. Data is uploaded by schools in term 3 and may not reflect final or total figures at time of report creation.

## Highest Qualifications held by the teaching workforce and workforce composition

All teachers at this school are qualified and registered with the SA Teachers Registration Board.

Qualification Level	Number of Qualifications
Bachelor's degrees or Diplomas	26
Postgraduate Qualifications	11

Data Source: Data extracted from Mandatory Workforce Information Collections as on the last pay date of June 2025. As self-reported by staff in the system.

Please note: Data includes staff who are Actively employed and on extended paid leave. Please note only the highest qualification of the Teaching staff is reported. Excludes any number of other certifications earned.

### Workforce composition including indigenous staff

	Teaching Staff		Non-Teaching Staff	
	Indigenous	Non-Indigenous	Indigenous	Non-Indigenous
Full-Time Equivalents	1.0	31.4	1.6	7.9
Persons	1.0	36.0	2.0	11.0

Data Source: Data extracted from Mandatory Workforce Information Collection as on the last pay date of June 2025.

Please note: Data includes staff who are actively employed and on extended paid leave. "Indigenous category" is self-reported by staff in the system.

## Financial Statement

Funding Source	Amount
Grants: State	\$5,647,202.51
Grants: Commonwealth	\$5600.00
Parent Contributions	\$54,932.00
Fund Raising	\$930.00
Other	\$4,050.11

Data Source: School supplied data.